

Technical advance

Open Access

## Microdissection: A method developed to investigate mechanisms involved in transmissible spongiform encephalopathy pathogenesis

Janice B Barr\*<sup>1</sup>, Robert A Somerville<sup>1</sup>, Yuen-Li Chung<sup>2</sup> and Janet R Fraser<sup>1</sup>

Address: <sup>1</sup>BBSRC & MRC Neuropathogenesis Unit, Institute for Animal Health, Edinburgh, UK and <sup>2</sup>Robert Steiner MR Unit, MRC Clinical Science Centre, Imperial College School of Medicine, Hammersmith Hospital, London, UK

Email: Janice B Barr\* - janice.barr@bbsrc.ac.uk; Robert A Somerville - robert.somerville@bbsrc.ac.uk; Yuen-Li Chung - ychung@sghms.ac.uk; Janet R Fraser - janet.fraser@bbsrc.ac.uk

\* Corresponding author

Published: 03 March 2004

Received: 20 October 2003

*BMC Infectious Diseases* 2004, 4:8

Accepted: 03 March 2004

This article is available from: <http://www.biomedcentral.com/1471-2334/4/8>

© 2004 Barr et al; licensee BioMed Central Ltd. This is an Open Access article: verbatim copying and redistribution of this article are permitted in all media for any purpose, provided this notice is preserved along with the article's original URL.

### Abstract

**Background:** The transmissible spongiform encephalopathies (TSEs) are a group of neurodegenerative diseases affecting both human and animals. The neuroanatomical changes which occur in the central nervous system (CNS) of TSE infected animals include vacuolation, gliosis, neuronal loss and the deposition of a disease specific protein, PrP<sup>Sc</sup>. Experimental murine models of scrapie, a TSE of sheep, have revealed that pathology may be confined to specific brain areas with targeting of particular neuronal subsets depending on route of injection and scrapie isolate.

To assess the biochemical changes which are taking place in these targeted areas it was necessary to develop a reliable sampling procedure (microdissection) which could be used for a variety of tests such as western blotting and magnetic resonance spectroscopy.

**Methods:** The method described is for the microdissection of murine brains. To assess the usefulness of this dissection technique for producing similar sample types for analysis by various down-stream biochemical techniques, the areas dissected were analysed for PrP<sup>Sc</sup> by western blotting and compared to immunocytochemical (ICC) techniques.

**Results:** Results show that the method generates samples yielding a consistent protein content which can be analysed for PrP<sup>Sc</sup>. The areas in which PrP<sup>Sc</sup> is found by western blotting compares well with localisation visualised by immunocytochemistry.

**Conclusion:** The microdissection method described can be used to generate samples suitable for a range of biochemical techniques. Using these samples a range of assays can be carried out which will help to elucidate the molecular and cellular mechanisms underlying TSE pathogenesis. The method would also be useful for any study requiring the investigation of discrete areas within the murine brain.

### Background

Transmissible spongiform encephalopathies are a group of neurodegenerative diseases which include scrapie, bovine spongiform encephalopathy (BSE), and Creutzfeldt-Jakob disease (CJD). Murine models have increased our understanding of the pathogenesis and biochemistry

of scrapie and indeed have been an invaluable tool in the characterisation of emerging TSEs such as BSE and vCJD (variant form of CJD linked to BSE exposure) [1,2].

Scrapie in murine models has a long asymptomatic phase, the length of which is characteristic of the model, fol-

lowed by onset of progressive clinical signs and finally death [3]. Neuropathology of a TSE infected animal reveals vacuolation of the neuropil, gliosis, and neuronal loss [4,5]. Another major pathological feature of scrapie is deposition of an abnormal form of the protein PrP [6] which is also found in the brains of other TSE disease affected animals [7,8]. PrP is a host-encoded glycoprotein with a primary structure of approximately 210 amino acids [9,10]. There are two N-linked glycosylation sites and a C-terminal glycoposphoinositol (GPI) anchor [11,12]. The unglycosylated protein has a molecular mass of about 25 kDa increasing to 33–35 kDa when fully glycosylated. The normal form of the protein is both detergent soluble and protease sensitive [13] in contrast to the abnormal form which is characterised by its relative protease resistance and insolubility in detergents. When treated with proteinase K the abnormal protein is partially digested and the resulting protease resistant form, migrates on a 1-dimensional electrophoresis gel (SDS-PAGE) to a distinct three band pattern with molecular mass between 18–30 kDa. The relative amounts of these bands has been examined as a possible diagnostic tool [14-16]. Glycosylation is also host controlled [17] and the banding pattern may also be specific to particular brain areas and neuronal subsets [18].

The murine scrapie models 87V and ME7 used in this experiment define the variation in pathology found in TSE pathogenesis. The 87V model displays PrP<sup>Sc</sup> in plaques and restricted labeling [19]. By contrast in the ME7 model, PrP<sup>Sc</sup> is found throughout the brain [20,21]. The variation in temporal and spatial distribution of PrP<sup>Sc</sup> and the mechanisms leading to neurodegenerative changes seen at terminal stages have still to be elucidated. To understand the neurodegenerative events leading to neuronal loss, we have recognised the need to isolate specific brain areas and examine each biochemically for mechanisms such as apoptosis and PrP<sup>Sc</sup> deposition. Whilst other groups have examined biopsies from specific brain areas in humans [22] and by dissection in hamsters [18], we require a method for murine brains which is reproducible and can be used in a range of biochemical tests. As only a small amount of tissue is obtained from a murine brain,

biochemical methods, in particular a western blotting technique for PrP<sup>Sc</sup> had to be adapted to maximise sensitivity.

We report our method of collection of samples and show immunoblots of PrP<sup>Sc</sup> deposition within microdissected areas, as an illustration of use within the TSE field. The method however could be used to collect samples from murine models in other areas of research.

## Methods

### Animals

All animals used in the experiment were housed and procedures carried out within a UK Home Office licensed unit which complies with the Animals (Scientific Procedures) Act 1986. Two inbred mouse strains VM/Dk *Prn<sup>b</sup>* (VM) and VM/Dk *Prn<sup>a</sup>*(SV) were inoculated intracerebrally with 20µl of a 1% (w/v) brain suspension of either 87V (VM) or ME7 (SV) strains of scrapie. Similar control groups were inoculated with a normal brain homogenate. The animals were culled by cervical dislocation at suitable intervals throughout disease, (ME7 model: every 30 days post injection (dpi) until the terminal stage of disease at about 160 dpi. 87V model: every 50 dpi until about 300 dpi). The brain was removed and carefully placed (to avoid damage during freezing) in a plastic universal tube, flash frozen in liquid nitrogen, and stored at -70°C. Brain samples for histology were fixed in 10% formol saline (see section 2.4).

Three brains were collected at each time point and microdissected for Western blotting as described in the following sections. Weights from samples obtained by microdissection are shown in Table 1.

### Microdissection

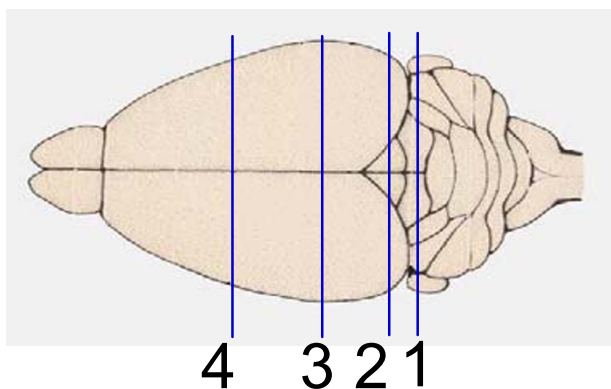
Microcentrifuge tubes numbered with animal number and brain area were weighed on a fine balance (Stanton).

A cold plate (Model E/66.3 Raymond Lamb Laboratory Supplies) was set to -10°C, and covered with aluminium foil for each sample. The brain was allowed to partially thaw before placing on the cold plate area.

**Table 1: Table showing the mean weights of dissected brain areas.**

Brain Area	No. of brains dissected	Mean Weight (mg)	SD	SEM
Cerebellum	118	22.2	5.06	0.47
Brain Stem	118	32.4	9.38	0.86
Dorsal Raphe *	118	4.2	1.15	0.11
Hippocampus *	118	6.2	1.29	0.12
Cortex	118	15.1	3.18	0.29
Thalamus	118	21.1	5.10	0.47
Paraterminal Body *	118	4.3	1.27	0.12

\*areas taken using punch technique



**Figure 1**  
**Coronally cut sections** Approximate levels as detailed in Sidman et al [24] 1 – Fig. 74 – Coronal section 455 2 – Fig. 64 – Coronal section 413 3 – Fig. 46 – Coronal section 321 4 – Fig. 25 – Coronal section 180

The brain was held gently with curved forceps and using a scalpel (Swann Norton No.11) four slices were coronally cut as in Fig. 1. Each slice was further dissected by cutting out areas of interest as shown in Fig. 2. Where the area of interest was too small for accurate dissection in this manner, a punch method was employed.

Using the cannula only of a biopsy needle (Seldinger needle, 18 g, 7 cms, Scottish Medical) a "core" of selected brain area was sampled by punching through the brain slice. Four to six punches were sampled and expelled by use of a syringe attached to the end of the cannula into the weighed microcentrifuge tube (Fig. 3). All samples after microdissection were immersed in liquid nitrogen immediately. The microcentrifuge tube was then re-weighed, the weight noted and the sample stored at  $-70^{\circ}\text{C}$ .

Every effort is made in the method to avoid tissue degradation. The whole brain was flash frozen and microdissection carried out on a cold plate. After microdissection the tubes containing microdissected areas are again flash frozen to avoid any loss of protein. As continual freezing and thawing would degrade the protein the samples had to be weighed between coming out of the liquid nitrogen and storing in the freezer without further thawing. In order to allow for discrepancies in weight due to freezing effects, two empty microtubes were weighed before and re-weighed after immersion in liquid nitrogen. The difference between the weights (average 0.0020 g) is used as a correction factor and subtracted from the sample tubes. In this way a wet weight equivalent is obtained as shown in Table 1.

## Western blotting

### Sample preparation

Each sample was homogenized in 10% wt/vol. lysis buffer (100 mM Tris buffered saline (TBS) pH 7.5, 0.5% deoxycholic acid, 0.5% NP40) using a battery operated homogeniser (Sigma Aldrich) with disposable pellet mixer (Anachem) attached.

The homogenate was then halved, proteinase K (final concentration 20  $\mu\text{g}/\text{ml}$ ) added to one aliquot (+PK) and digested at  $37^{\circ}\text{C}$  in a water bath for 40 minutes. To stop further degradation due to protease digestion a solution of 100 mM phenylmethanesulfonyl fluoride (PMSF), 100 mM N-ethylmaleimide (NEM) in propan-2-ol to a final concentration of 10 mM was added. The protease inhibitors were also added to the untreated (-PK) aliquot.

Protein precipitation was then carried out using 4  $\times$  vol. of an ice-cold mixture of 2% acetic acid in methanol. After freezing overnight at  $-20^{\circ}\text{C}$  the samples were centrifuged for 10 minutes at 16,000 g, the supernatant removed and the pellet dried for one hour in a centrifugal vacuum concentrator (Thermo Savant Speed-Vac).

### Protein estimation

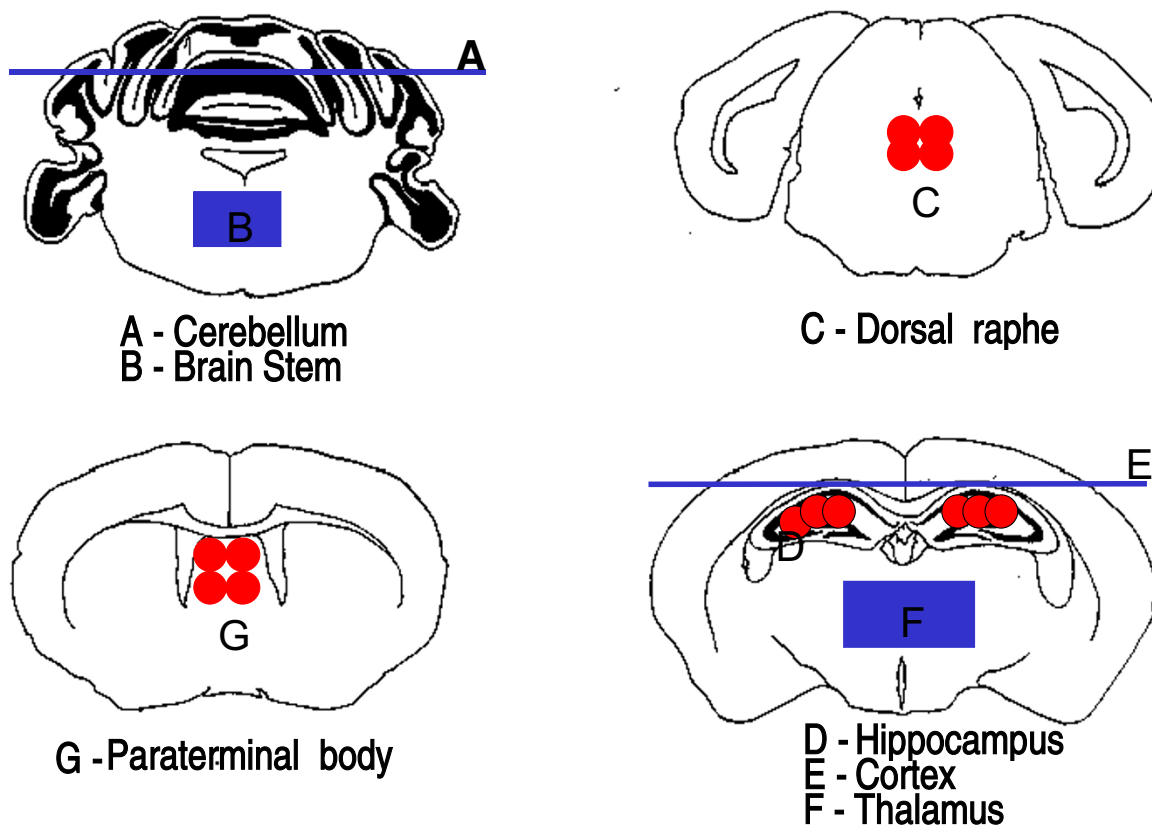
Total protein estimation was carried out following the microwell plate protocol of a BCA Protein Assay Kit available from Perbio Science (Product 23225 & 23227). A 5  $\mu\text{l}$  aliquot of homogenate was pipetted to a microtitre plate well containing 20  $\mu\text{l}$  of distilled water i.e.1:5 dilution of original homogenate. A range of standards were prepared as per the protocol, using similarly diluted lysis buffer as diluent. The samples and standards were read and analysed on a 'Molecular Devices' v-max microplate reader. The protein content of seven brains, taken at different time points throughout disease progression, are shown in Table 2.

### Electrophoresis

The pellet was solubilised in 1  $\times$  sample buffer (dilution of 5  $\times$  sample buffer (Tris-HCl, 60 mM pH 6.8, 25% glycerol, 2% sodium dodecyl sulfate (SDS), 1% 2-mercaptoethanol, deionised water), to give a concentration of 10% the original tissue weight per volume. The sample was briefly vortexed, heated for 15 minutes at  $98^{\circ}\text{C}$ , briefly vortexed again and centrifuged at 16000 g for 5 mins. A 10  $\mu\text{l}$  aliquot of the sample was then electrophoresed in a 12% SDS-PAGE mini gel. A protein standard was also loaded and the gel was run until the dye front reached the bottom of the gel.

### Gel systems

The use of mini gel systems was not as universally used as they are at present when this work was initiated therefore



**Figure 2**  
**Maps of dissected areas.** Blue depicts areas cut with scalpel. Red depicts punched areas.

two systems available in the laboratory were used. The Bio-Rad Mini Protean II system with a 12% Tris/HCl ready gel (using SDS buffers) was used to electrophorese the ME7 samples. A BioRad LW Kaleidoscope prestained protein standard was used to estimate molecular weight. The Invitrogen, NuPAGE® gel system with 12%Tris-Glycine gel and SDS buffers was used to electrophorese the 87V samples with a MultiMark® multi coloured prestained protein standard.

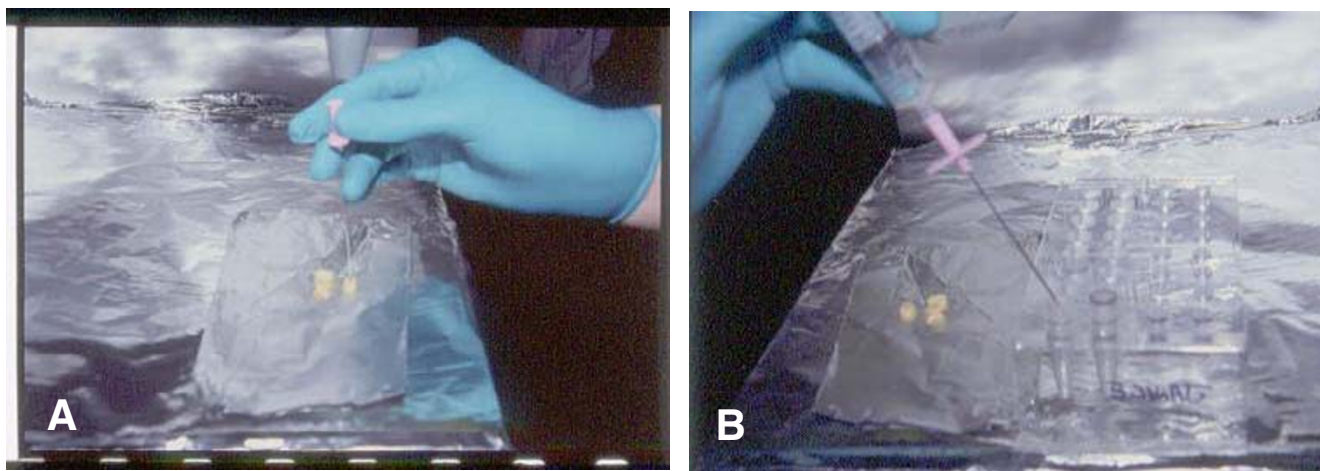
*Immunoblotting*

The gel was then blotted (BioRad Semi-dry Blotter or Novex blotting system) onto a PVDF membrane (Immobilon – P, Millipore). On unloading, the membrane was placed in methanol for 10 seconds, rinsed in TBS, followed by 0.5% blocking solution (western blocking reagent, Roche) for 5 minutes. The blot was incubated overnight with 6H4 monoclonal antibody (Prionics AG) made up in blocking solution at a concentration of

1:30,000. The primary antibody was drained and the blot rinsed once with TBST (0.1% Tween in TBS), followed by a further rinse in blocking solution. The secondary antibody (Jackson Immunoresearch Laboratories POD conjugated Affinity pure donkey anti-mouse IgG (H+L)) was applied in blocking solution at a 1:30,000 concentration and incubated for 90 minutes. The blots were washed four times with TBST before using the visualization kit. All washes and incubations were carried out using an orbital shaker.

*Visualization*

Visualization was achieved by using a western blotting kit (Pierce West Dura Western Blotting Kit) according to manufacturers' instructions. The blot was enclosed in a plastic covering, and placed in a cassette with photographic film at exposures of 30 seconds, 1 and 2 minutes. Photographic film was used in preference to a densitome-



**Figure 3**  
**Punch Technique** A – needle punching B – expelling sample from needle

**Table 2: %Protein Content in samples**

Brain Area	No. of brains dissected	% protein in sample	SD	SEM
Cerebellum	7	1.79	0.50	0.19
Brain Stem	7	1.30	0.47	0.18
Dorsal Raphe	7	1.41	0.51	0.19
Hippocampus	7	1.25	0.27	0.10
Cortex	7	1.65	0.31	0.12
Thalamus	7	1.69	0.23	0.09
Paraterminal Body	7	2.10	0.94	0.35

ter at this stage to maximise sensitivity and thereby visualise as much PrP<sup>Sc</sup> as possible. Examples of the immunoblots for both ME7 and 87V can be seen in Figure 4.

**Immunocytochemistry**

Immunocytochemistry was carried out as described in Brown et al [23]. Briefly brains were fixed in 10% formol saline and embedded in paraffin wax. Coronal sections (6 μm) were pretreated using hydrated autoclaving for 15 minutes at 121 °C and immersed in 98% formic acid for 10 minutes. PrP was immunolabelled by incubation overnight with 6H4 (Prionics) as primary antibody at a 1:1000 dilution. A biotinylated rabbit anti-mouse (Jackson ImmunoResearch Laboratories) secondary antibody was applied and the slide incubated for 1 hour. The ABC Elite kit (Vector Laboratories) was used throughout and visualization was achieved using 3,3' diaminobenzidine (Merck).

**Results**

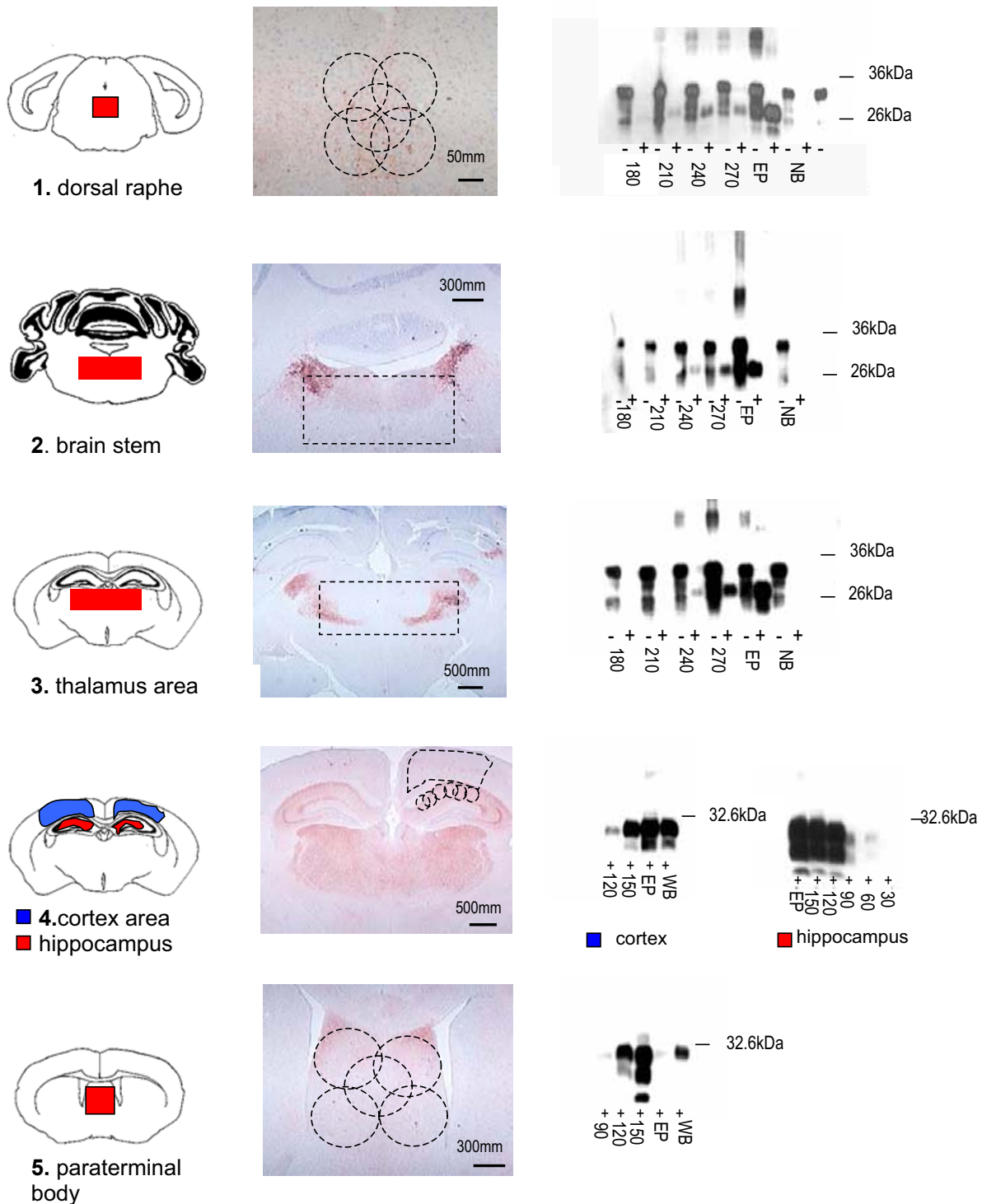
**Evaluation of microdissection technique**

Despite a small size of sample produced by microdissection, the weights of brain areas were reproducible over a large number of samples (see Table 1). In contrast with the weights of samples taken by dissection, such as cerebellum, brain stem and thalamus the samples taken with biopsy needle i.e. hippocampus, dorsal raphe and paraterminal body show little variation in weight indicating that this is a particularly precise way of sampling the brain area of interest. The protein content (see standard deviations in Table 2) was very consistent in the samples indicating that the method is useful for further comparative protein analysis.

**PrP<sup>Sc</sup> detection**

PrP<sup>Sc</sup> was detected in all samples as demonstrated in the immunoblots shown in Figure 4. In the samples without proteinase K digestion a series of bands can be seen at a





**Figure 4**  
**Diagram of microdissected areas with corresponding PrP<sup>Sc</sup> immunolabelled sections and immunoblots taken at different time points throughout disease.** Sections and immunoblots numbered; (1–3) -87V scrapie model; (4–5) -ME7 scrapie model; immunoblots show both PK treated (+) and untreated samples (-) normal brain (NB), numbers(at the foot of each gel lane) denote days post injection(dpi), terminal end point of disease(EP) and whole brain samples(WB)

**Table 3: Deposition of PrP<sup>Sc</sup> in microdissected areas of 87V scrapie model.**

DPI	A		B		C		D		E		F		G	
	W	I	W	I	W	I	W	I	W	I	W	I	W	I
30														
60														
90														
120														
150				+	?	+								
180			+	N/A	+	N/A						N/A		
210			+	+	+	+						N/A		
240			+	+	+	+	+	+	?	+	+	+	?	+
270		+	+	+	+	+	+	+	?	+	+	+	+	+
300	All -ve	+	+	+	+	+	+	+	?	+	+	+	+	+

Comparison of dissected brain areas (A-G as in Fig. 2) throughout time course of disease (dpi) in 87V scrapie model. PrP<sup>Sc</sup> deposition (+) visualised by immunocytochemistry (I) and western blotting(W) using 6H4Mab, (?) denotes where PrP<sup>Sc</sup> was visualised in one brain only(see section 2.4), section not available (N/A).

**Table 4: Deposition of PrP<sup>Sc</sup> in microdissected areas of ME7 scrapie model**

DPI	A		B		C		D		E		F		G	
	W	I	W	I	W	I	W	I	W	I	W	I	W	I
30														
60							+	+		+		+		+
90			?		+	+	+	+	?	+	+	+	+	+
120	+	N/A	?	+	+	+	+	+	+	+	+	+	+	+
150	+	N/A	+	+	+	+	+	+	+	+	+	+	+	+
EP	+	N/A	+	+	+	+	+	+	+	+	+	+	+	+

Comparison of dissected brain areas (A-G as in Fig. 2) throughout time course of disease (dpi) in ME7 scrapie model. PrP<sup>Sc</sup> deposition (+) visualized by immunocytochemistry (I) and western blotting (W) using 6H4Mab, (?) denotes where PrP<sup>Sc</sup> was visualized in one brain only(see section 2.4), (N/A) section not available.

molecular mass between 20–35 kDa representing the total PrP content, i.e. a mixture of PrP<sup>c</sup> and PrP<sup>Sc</sup> before and after proteolytic cleavage. In Tables 3 & 4 a scoring system denotes the presence of PrP<sup>Sc</sup>. A (+) sign signifies where PrP<sup>Sc</sup> was visible in the immunoblots of at least two out of the three microdissected brains. A (?) denotes where PrP<sup>Sc</sup> was visible in one blot but not in the other two.

The distribution of PrP<sup>Sc</sup> throughout areas of the brain in the 87V model (Table 3) is strikingly different to that of the ME7 model (Table 4). In the 87V model only the brain stem and dorsal raphe are positive at 50% of the incubation period (150 dpi) By comparison every area except the cerebellum was positive at the same percentage incubation period of the ME7 model (90 dpi). The first clinical signs in the 87V model are around 93% of the incubation period (272 dpi), by which time all the brain areas, in contrast with the previous time point (240 dpi) show PrP<sup>Sc</sup> deposition. Western blotting has failed to show PrP<sup>Sc</sup> in the cerebellum and definitively in the cortex

of this model, perhaps due to sparse plaque distribution in these areas suggesting a low concentration. PrP<sup>Sc</sup> deposition in ME7 model begins very early in the incubation period (60 dpi) appearing within the hippocampus cortex, thalamus and paraterminal body. Again the immunoblot is only positive in the hippocampus at this time point. In contrast with the 87V model, all areas have PrP<sup>Sc</sup> deposition at 75% of incubation (120 dpi). The first clinical signs in this model are around 92% of incubation (151 dpi) which is a similar percentage to the 87V model.

**Discussion**

The microdissection technique described above provides a method for obtaining samples from targeted areas to be examined biochemically. The sensitivity of the immunoblotting technique has been optimised to allow for smaller weights of sample to be tested for PrP<sup>Sc</sup>. Combining the two methods provides a tool with which to examine progression of disease within defined areas, thereby supplementing information gained through histopathological

techniques. To maximise sensitivity we used photographic film for detecting PrP<sup>Sc</sup> however to estimate glycosylation ratios in each brain area densitometry could be carried out. Our immunocytochemical findings agree with a previous study by Bruce et al [19] in which these models were also compared using a different antibody and a more limited serial kill.

It is interesting to note that although the 87V model has more targeted PrP<sup>Sc</sup> deposition and the amount present overall is less than the ME7 model, both have similar time points where clinical signs are apparent. As has been observed in other models [23], the concentration of PrP<sup>Sc</sup> within the brain as a whole does not dictate the fate of the animal. PrP<sup>Sc</sup> may be in a particular neurotoxic form to which critical areas of the brain succumb leading to the eventual death of the animal. By isolating particular brain areas with methods such as the microdissection described we may examine other events leading to neurodegeneration in the TSEs which may elucidate the role of PrP.

## Conclusions

The microdissection protocol provides a standardized approach to obtaining samples from brain areas for analysis. The method described allows us to isolate particular brain areas to examine the events leading to neurodegeneration in the TSE group of diseases. We have already used this method to isolate areas for analysis by magnetic resonance spectroscopy (manuscript in preparation) and for a proteomics study (in progress). In this paper we have demonstrated that PrP<sup>Sc</sup> distribution throughout the brain displayed by immunocytochemistry techniques, can be definitively verified by western blotting the microdissected areas. Using the microdissection of discrete brain areas in combination with other analytical methods will provide a qualitative and quantitative approach in assessing the pathogenesis of TSE infection. The microdissection method could also prove useful in other areas of research where the isolation of discrete murine brain areas would aid scientific understanding of brain function and disease.

## Competing interests

None declared.

## Authors' contributions

J.B. designed the project and protocols involved, performed microdissection of brain samples, immunoblots, protein estimation and drafted this manuscript. J.F. conceived the initial microdissection study and participated in the editing and drafting of this manuscript. R.S. gave advice on immunoblotting PrP<sup>Sc</sup>, and interpretation of results as well as statistical analysis of protein results. Y-L.C. as a joint grant holder of the main project provided

advice and consultation on sample application for downstream analysis by magnetic resonance spectroscopy.

## Acknowledgements

Thanks to D. Brown and W-G Liu for providing immunocytochemistry results. Thanks also to I. McConnell, L. Gray and E. Murdoch for care of animals and to S. Coupar for help in sample handling. This project was funded by MRC Grant No G9631598.

## References

1. Bruce ME, Will RG, Ironside JW, McConnell I, Drummond D, Suttie A, McCardle L, Chree A, Hope J, Birkett C, Cousens S, Fraser H, Bostock CJ: **Transmissions to mice indicate that 'new variant' CJD is caused by the BSE agent.** *Nature* 1997, **389**:498-501.
2. Bruce M, Chree A, McConnell I, Foster J, Pearson G, Fraser H: **Transmission of bovine spongiform encephalopathy and scrapie to mice: strain variation and the species barrier.** *Philos Trans R Soc Lond B Biol Sci* 1994, **343**:405-411.
3. Bruce ME, McConnell I, Fraser H, Dickinson AG: **The disease characteristics of different strains of scrapie in Sinc congenic mouse lines: implications for the nature of the agent and host control of pathogenesis.** *J Gen Virol* 1991, **72** ( Pt 3):595-603.
4. Jeffrey M, Fraser JR, Halliday WG, Fowler N, Goodsir CM, Brown DA: **Early unsuspected neuron and axon terminal loss in scrapie-infected mice revealed by morphometry and immunocytochemistry.** *Neuropathol Appl Neurobiol* 1995, **21**:41-49.
5. Jeffrey M, Halliday WG, Bell J, Johnston AR, MacLeod NK, Ingham C, Sayers AR, Brown DA, Fraser JR: **Synapse loss associated with abnormal PrP precedes neuronal degeneration in the scrapie-infected murine hippocampus.** *Neuropathol Appl Neurobiol* 2000, **26**:41-54.
6. Diringer H, Gelderblom H, Hilmert H, Ozel M, Edelbluth C, Kimberlin RH: **Scrapie infectivity, fibrils and low molecular weight protein.** *Nature* 1983, **306**:476-478.
7. Bolton DC, McKinley MP, Prusiner SB: **Identification of a protein that purifies with the scrapie prion.** *Science* 1982, **218**:1309-1311.
8. Hope J, Reekie LJ, Hunter N, Multhaup G, Beyreuther K, White H, Scott AC, Stack MJ, Dawson M, Wells GA: **Fibrils from brains of cows with new cattle disease contain scrapie-associated protein.** *Nature* 1988, **336**:390-392.
9. Oesch B, Westaway D, Walchli M, McKinley MP, Kent SB, Aebersold R, Barry RA, Tempst P, Teplow DB, Hood LE, et al.: **A cellular gene encodes scrapie PrP 27-30 protein.** *Cell* 1985, **40**:735-746.
10. Bolton DC, Meyer RK, Prusiner SB: **Scrapie PrP 27-30 is a sialoglycoprotein.** *J Virol* 1985, **53**:596-606.
11. Stahl N, Baldwin MA, Hecker R, Pan KM, Burlingame AL, Prusiner SB: **Glycosylinositol phospholipid anchors of the scrapie and cellular prion proteins contain sialic acid.** *Biochemistry* 1992, **31**:5043-5053.
12. Endo T, Groth D, Prusiner SB, Kobata A: **Diversity of oligosaccharide structures linked to asparagines of the scrapie prion protein.** *Biochemistry* 1989, **28**:8380-8388.
13. Meyer RK, McKinley MP, Bowman KA, Braunfeld MB, Barry RA, Prusiner SB: **Separation and properties of cellular and scrapie prion proteins.** *Proc Natl Acad Sci U S A* 1986, **83**:2310-2314.
14. Kascsak RJ, Rubenstein R, Merz PA, Carp RI, Wisniewski HM, Diringer H: **Biochemical differences among scrapie-associated fibrils support the biological diversity of scrapie agents.** *J Gen Virol* 1985, **66** ( Pt 8):1715-1722.
15. Parchi P, Gambetti P: **Human prion diseases.** *Curr Opin Neurol* 1995, **8**:286-293.
16. Collinge J: **New diagnostic tests for prion diseases.** *N Engl J Med* 1996, **335**:963-965.
17. Somerville RA: **Host and transmissible spongiform encephalopathy agent strain control glycosylation of PrP.** *J Gen Virol* 1999, **80** ( Pt 7):1865-1872.
18. DeArmond SJ, Qiu Y, Sanchez H, Spilman PR, Ninchak-Casey A, Alonso D, Daggett V: **PrPc glycoform heterogeneity as a function of brain region: implications for selective targeting of neurons by prion strains.** *J Neuropathol Exp Neurol* 1999, **58**:1000-1009.



19. Bruce ME, McBride PA, Farquhar CF: **Precise targeting of the pathology of the sialoglycoprotein, PrP, and vacuolar degeneration in mouse scrapie.** *Neurosci Lett* 1989, **102**:1-6.
20. Jeffrey M, Martin S, Barr J, Chong A, Fraser JR: **Onset of accumulation of PrPres in murine ME7 scrapie in relation to pathological and PrP immunohistochemical changes.** *J Comp Pathol* 2001, **124**:20-28.
21. Liu WG, Brown DA, Fraser JR: **Immunohistochemical comparison of anti-prion protein (PrP) antibodies in the CNS of mice infected with scrapie.** *J Histochem Cytochem* 2003, **51**:1065-1071.
22. Castellani RJ, Parchi P, Madoff L, Gambetti P, McKeever P: **Biopsy diagnosis of Creutzfeldt-Jakob disease by western blot: a case report.** *Hum Pathol* 1997, **28**:623-626.
23. Brown DA, Bruce ME, Fraser JR: **Comparison of the neuropathological characteristics of bovine spongiform encephalopathy (BSE) and variant Creutzfeldt-Jakob disease (vCJD) in mice.** *Neuropathol Appl Neurobiol* 2003, **29**:262-272.
24. Sidman L Angevine, JB, Pierce ET: **Atlas of the Mouse Brain and Spinal Cord.** *Harvard University Press, Cambridge Mass.*; 1971.

### Pre-publication history

The pre-publication history for this paper can be accessed here:

<http://www.biomedcentral.com/1471-2334/4/8/prepub>

Publish with **BioMed Central** and every scientist can read your work free of charge

*"BioMed Central will be the most significant development for disseminating the results of biomedical research in our lifetime."*

Sir Paul Nurse, Cancer Research UK

Your research papers will be:

- available free of charge to the entire biomedical community
- peer reviewed and published immediately upon acceptance
- cited in PubMed and archived on PubMed Central
- yours — you keep the copyright

Submit your manuscript here:  
[http://www.biomedcentral.com/info/publishing\\_adv.asp](http://www.biomedcentral.com/info/publishing_adv.asp)

